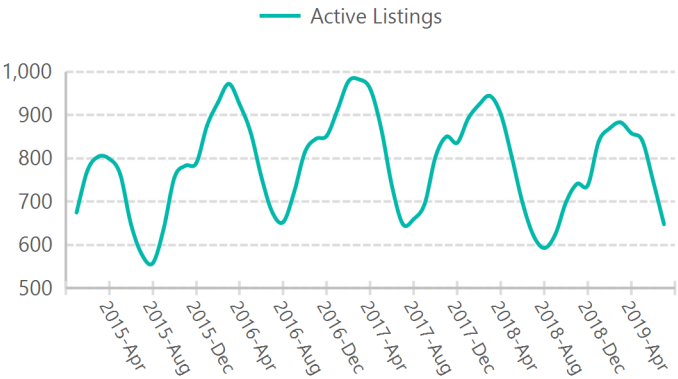
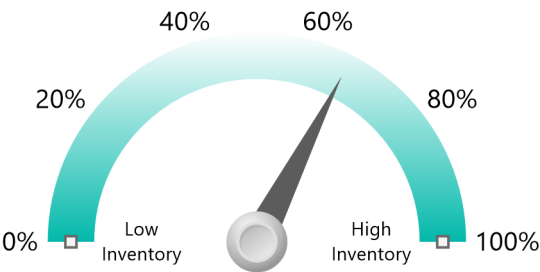


Active Listings (Supply)

Active Listings

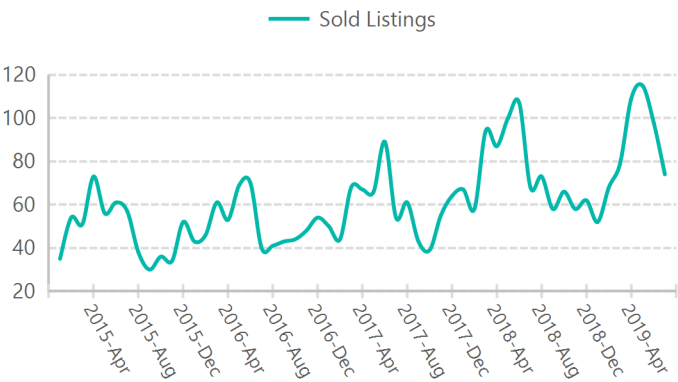


Seasonally Adjusted Current Supply Index

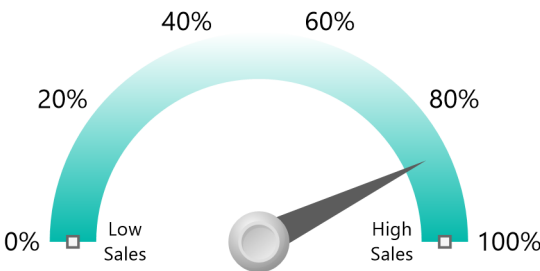


Sold Listings (Demand)

Sold Listings

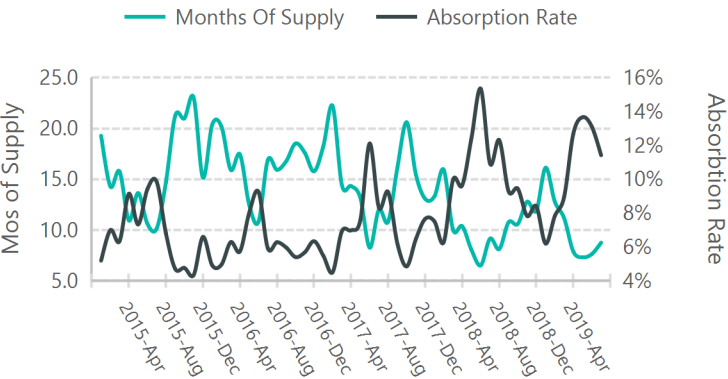


Seasonally Adjusted Current Demand Index

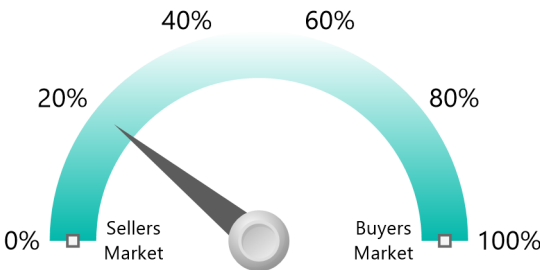


Supply vs Demand

Months of Supply/Absorption Rate



Seasonally Adjusted MOS Relative Strength



Supply vs Demand - Monthly Breakdown

Year - Month	Supply	Supply Index (Seasonal)	Demand	Demand Index (Seasonal)	Months Of Supply	Mos of Supply Index (Seasonal)
2019						
July	648	65.08%	74	85.60%	8.76	21.55%
June	748	76.19%	98	81.26%	7.63	27.01%
May	841	62.27%	115	91.35%	7.31	11.27%
April	858	31.30%	109	92.11%	7.87	12.25%
March	883	32.19%	79	76.19%	11.18	20.12%
February	869	37.73%	68	92.11%	12.78	13.84%
January	839	50.00%	52	53.49%	16.13	31.30%
2018						
December	738	10.34%	62	82.57%	11.90	12.77%
November	741	11.27%	58	81.26%	12.78	15.57%
October	699	9.47%	66	92.11%	10.59	7.18%
September	624	16.79%	58	90.53%	10.76	9.90%
August	593	32.19%	73	88.73%	8.12	11.75%