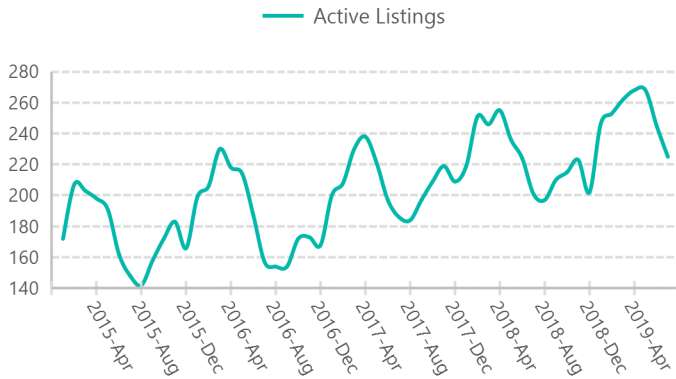
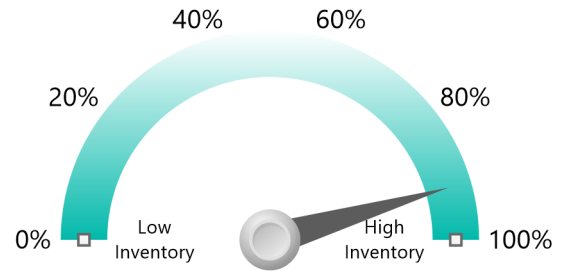


## Active Listings (Supply)

### Active Listings

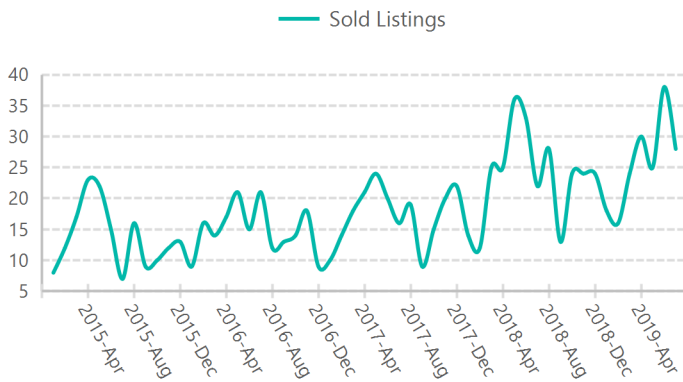


### Seasonally Adjusted Current Supply Index

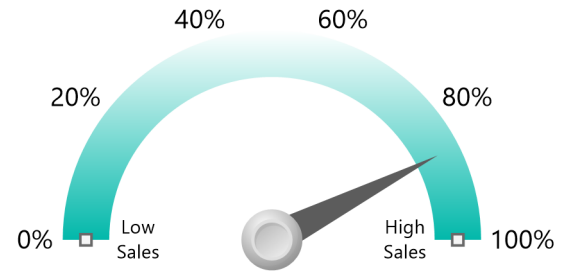


## Sold Listings (Demand)

### Sold Listings

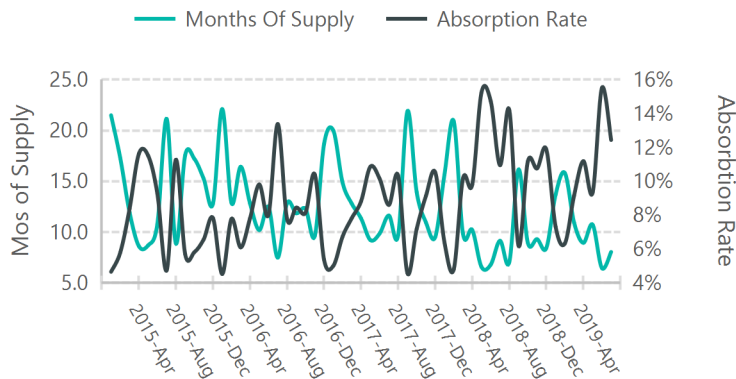


### Seasonally Adjusted Current Demand Index

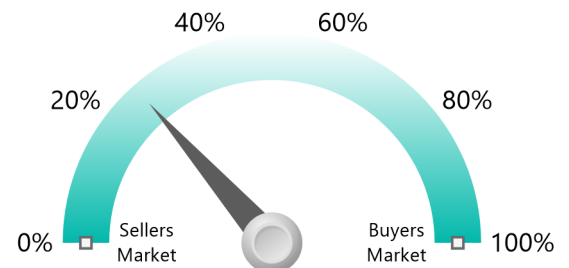


## Supply vs Demand

### Months of Supply/Absorption Rate



### Seasonally Adjusted MOS Relative Strength



## Supply vs Demand - Monthly Breakdown

Year - Month	Supply	Supply Index (Seasonal)	Demand	Demand Index (Seasonal)	Months Of Supply	Mos of Supply Index (Seasonal)
2019						
July	225	90.95%	28	85.02%	8.04	27.01%
June	245	90.10%	38	91.35%	6.45	13.84%
May	268	92.82%	25	41.59%	10.72	84.43%
April	268	87.75%	30	90.95%	8.93	20.12%
March	262	90.10%	24	85.60%	10.92	27.84%
February	253	87.23%	16	88.25%	15.81	42.56%
January	246	92.11%	18	93.48%	13.67	9.47%
2018						
December	202	76.19%	24	85.02%	8.42	19.42%
November	223	83.21%	24	87.23%	9.29	23.81%
October	215	83.83%	24	91.35%	8.96	11.27%
September	210	86.70%	13	86.70%	16.15	43.55%
August	197	86.16%	28	90.95%	7.04	14.40%