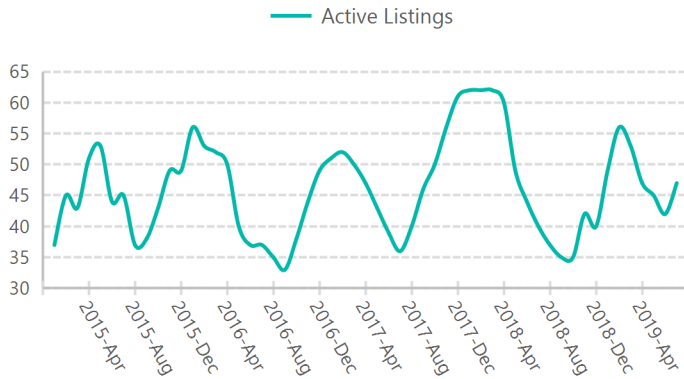
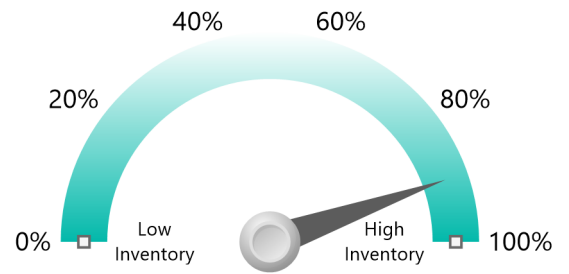


Active Listings (Supply)

Active Listings

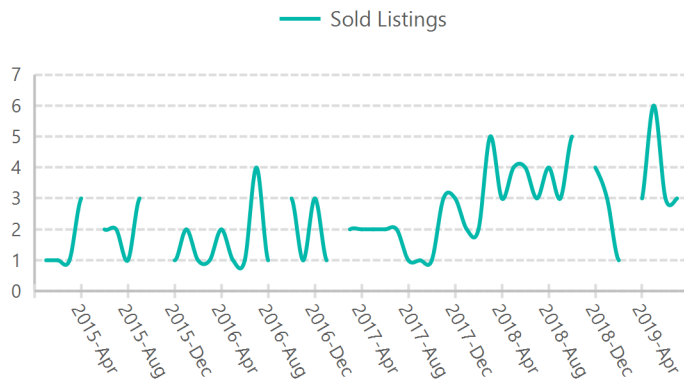


Seasonally Adjusted Current Supply Index

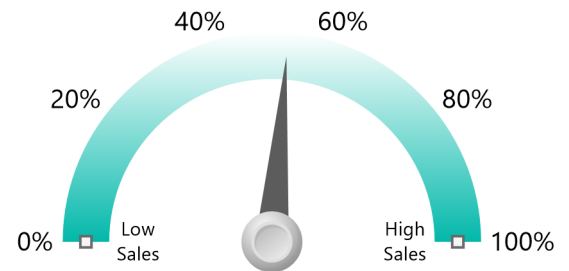


Sold Listings (Demand)

Sold Listings

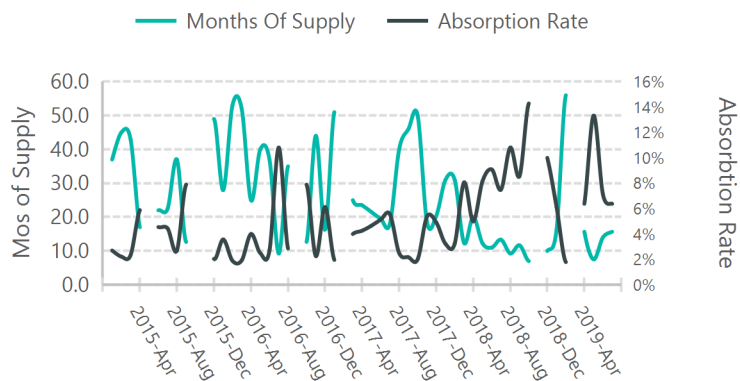


Seasonally Adjusted Current Demand Index

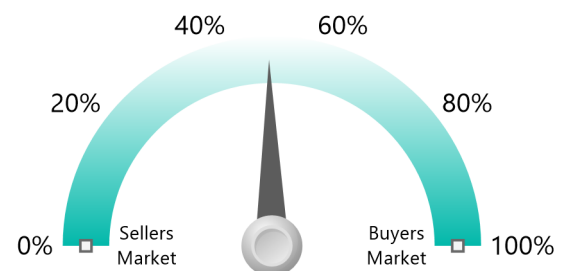


Supply vs Demand

Months of Supply/Absorption Rate



Seasonally Adjusted MOS Relative Strength



Supply vs Demand - Monthly Breakdown

Year - Month	Supply	Supply Index (Seasonal)	Demand	Demand Index (Seasonal)	Months Of Supply	Mos of Supply Index (Seasonal)
2019						
July	47	89.20%	3	52.49%	15.67	49.50%
June	42	62.27%	3	73.81%	14.00	25.38%
May	45	42.56%	6	89.20%	7.50	18.74%
April	47	23.04%	3	73.81%	15.67	12.77%
March	53	55.47%				
February	56	68.70%	1	32.19%	56.00	80.58%
January	49	41.59%	3	91.35%	16.33	9.90%
2018						
December	40	14.98%	4	86.16%	10.00	20.83%
November	42	20.83%				
October	35	18.08%	5	83.21%	7.00	24.59%
September	35	30.42%	3	76.19%	11.67	27.01%
August	37	50.00%	4	93.48%	9.25	6.85%